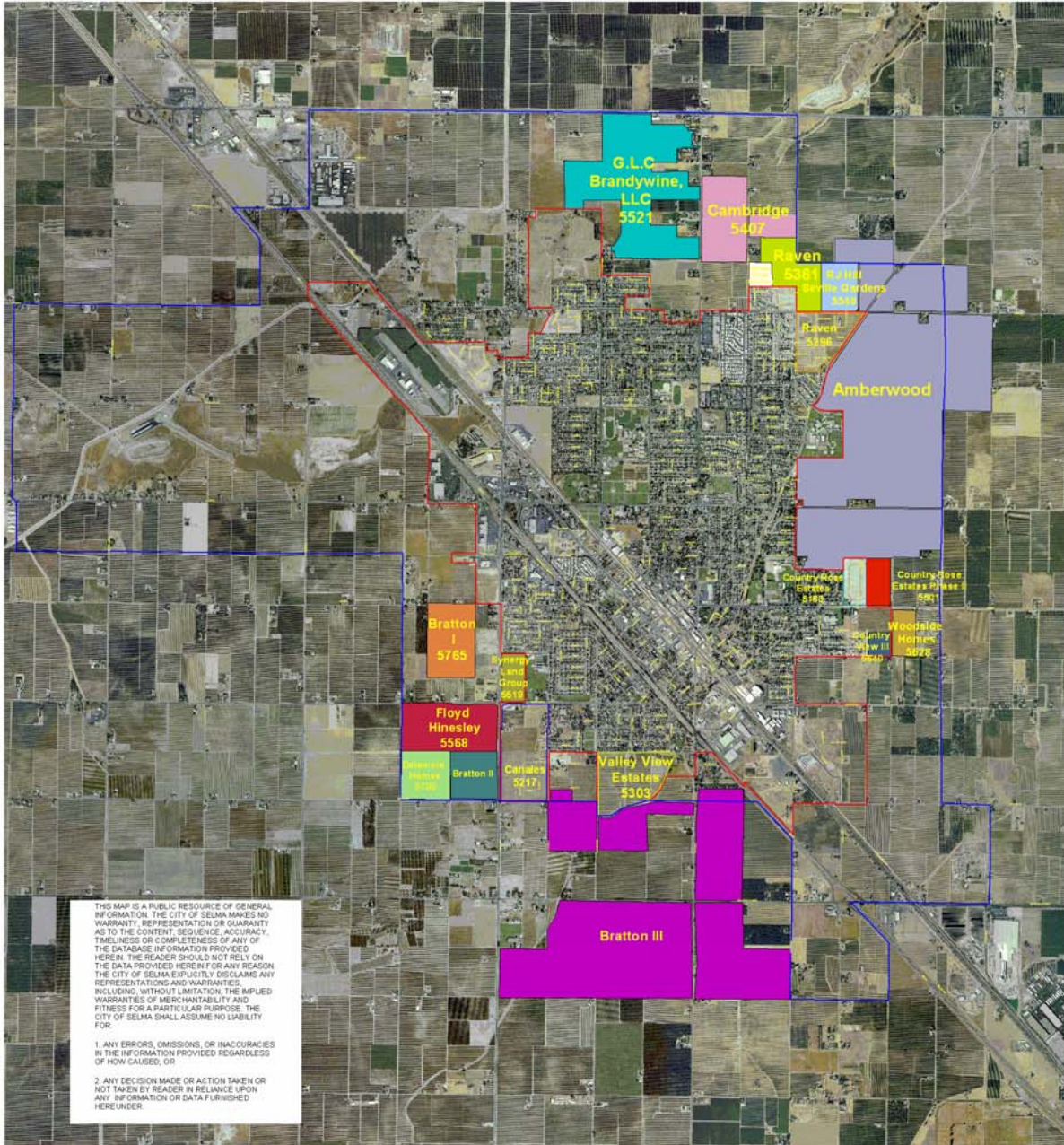


# Current & Proposed Residential Development



THIS MAP IS A PUBLIC RESOURCE OF GENERAL INFORMATION. THE CITY OF SELMA MAKES NO WARRANTY, REPRESENTATION OR GUARANTEE AS TO THE CONTENT, SEQUENCE, ACCURACY, TIMELINESS OR COMPLETENESS OF ANY OF THE DATABASE INFORMATION PROVIDED HEREIN. THE READER SHOULD NOT RELY ON THE DATA PROVIDED HEREIN FOR ANY REASON. THE CITY OF SELMA EXPLICITLY DISCLAIMS ANY REPRESENTATIONS AND WARRANTIES, INCLUDING, WITHOUT LIMITATION, THE IMPLIED WARRANTIES OF MERCHANTABILITY AND FITNESS FOR A PARTICULAR PURPOSE. THE CITY OF SELMA SHALL ASSUME NO LIABILITY FOR:

1. ANY ERRORS, OMISSIONS, OR INACCURACIES IN THE INFORMATION PROVIDED REGARDLESS OF HOW CAUSED, OR
2. ANY DECISION MADE OR ACTION TAKEN OR NOT TAKEN BY READER IN RELIANCE UPON ANY INFORMATION OR DATA FURNISHED HEREUNDER.

Selma Sphere of Influence	Selma City Limits	5601 Country Rose Estates II Approved - 33 Lots 19.72 Ac	5519 Synergy Land Group Approved - 66 Lots 15.79 Ac	5568 Floyd Hinesley Conceptual - 146 Lots 39.39 Ac	5628 Woodside Homes Submitted - 64 Lots 19.32 Ac
5183 Country Rose Estates - 44 Lots Under Construction 20.00 Ac	5361 Raven - Villa Corvino XI Submitted - 143 Lots 44.73 Ac	5521 G.L.C. Brandywine, LLC Submitted - 659 Lots 200.56 Ac	Bratton II Conceptual - 141 Lots 38.31 Ac	5790 Delamore Homes Submitted - 137 Lots 40.00 Ac	5765 Bratton I Submitted - 208 Lots 49.06 Ac
5217 Canales - 153 Lots Approved 38 Ac	5407 Cambridge Homes Submitted - 299 Lots 90.37 Ac	5540 Seville Gardens Conceptual - 103 Lots 27.55 Ac	5640 Country View III Approved - 44 Lots 9.02 Ac	Bratton Development Conceptual	
5296 Raven Homes - 130 Lots Under Construction 47.12 Ac	Heritage Homes Erickson Conceptual - 44 Lots 10 Ac	Amberwood Conceptual - 2570 Lots 686 Ac			
5303 Valley View Village - 193 Lots Under Construction 51.03 Ac					

Map prepared by the  
City of Selma GIS Dept  
6/19/2007

**City of Selma**  
**Current Subdivision Information**

**Subdivisions Currently Constructing**

<b>Tract Number</b>	<b>Total Lots</b>	<b>Final Map Approved</b>	<b>Name of Tract</b>	<b>Owner/ Developer</b>	<b>Permits Issued</b>	<b>Vacant Lots</b>
4695	50	10-4-99	Country View Estates #2	Olivia Merigian	44	6
5183	41	4/1/04	Country Rose Estates	La Dante Rose	40	1
5217	153	4/4/2005	Canales	Canales - Selma LLC	0	153
5296	130	6/20/2005	Villa Corvino X	Raven Development	39	91
5303	192	7/18/2005	Valley View Village	Lynx Management	36	156
5640	44	11/06/2006	Country View III	Olivia Merigian	0	44

**Tentative Tracts (Not Yet Constructing)**

<b>Tract Number</b>	<b>Total Lots</b>	<b>Tentative Map Approved</b>	<b>Name of Tract</b>	<b>Owner/ Developer</b>	<b>Expiration Date</b>	<b>Date Annexed</b>
5601	33		Country Rose Phase II	La Dante Rose		
5361	143		Villa Corvino XI	Larry Raven		
5407	299		Cambridge Homes	Lennar Homes		
5519	86		Esraelian Estates	Synergy Land Group		
5521	659		G.L.C. Brandywine L.L.C.	G.L.C. Brandywine L.L.C.		
5540	103		Seville Gardens	R.J. Hill		
5651	93		Villa Corvino XII	Larry Raven		
5563	44		Heritage Park	Erickson Realty Group		
5765	219		Bratton I	Bratton I		