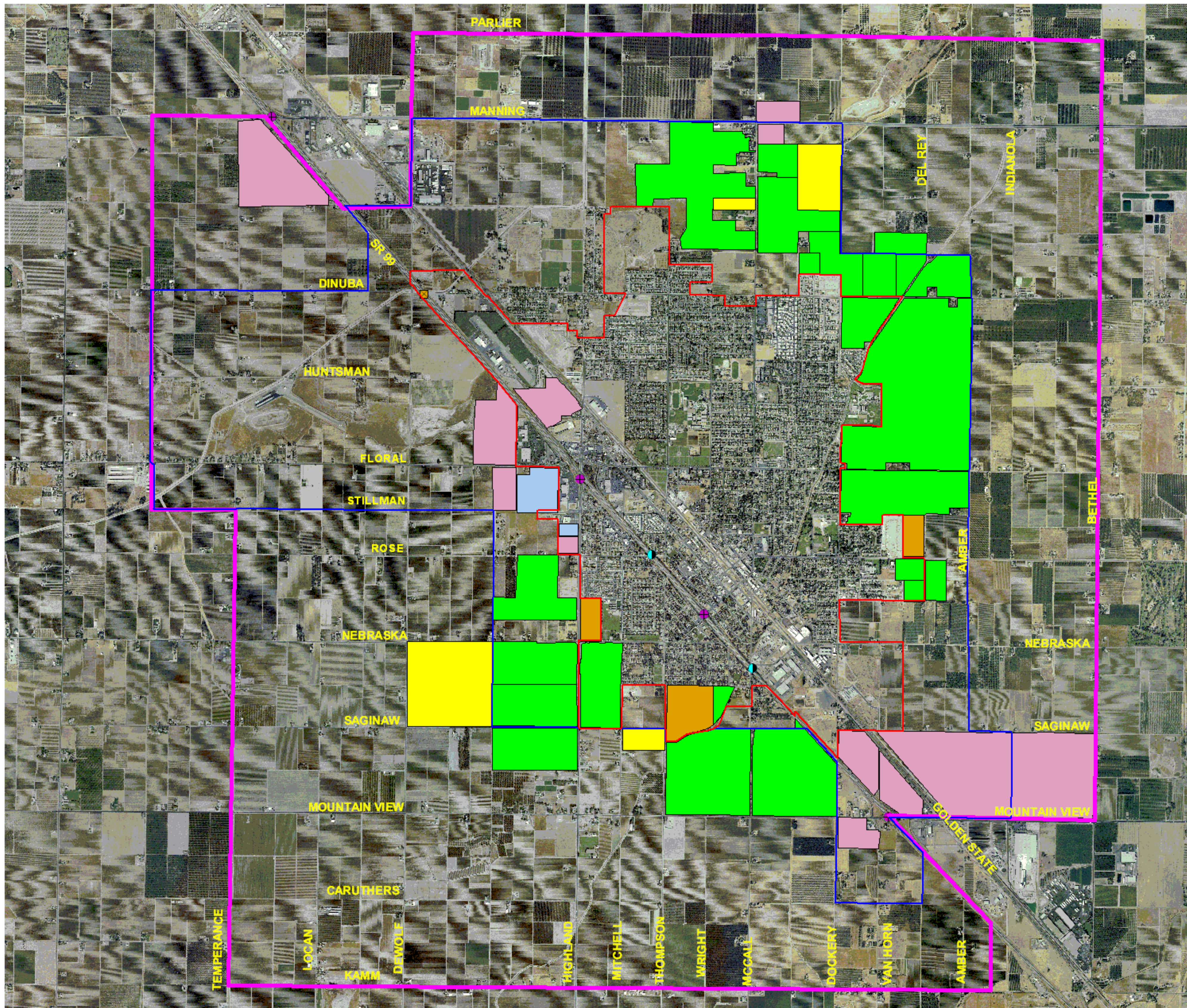
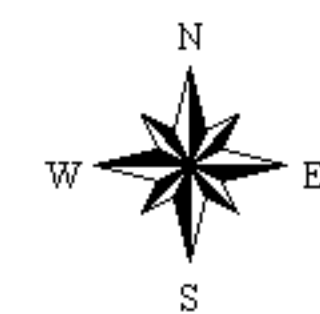


City of Selma 1 to 5 Year  
 Conceptual Area of Interest  
 Proposed and Conceptual  
 Residential, Commercial and School Development



- Current City Limit Boundary
- Proposed Area of Interest
- Current Sphere of Influence
- Current and Proposed Residential Development 1-5 years
- Proposed Commercial Development 1-5 years
- Approved Residential Projects
- Approved Commercial Projects
- Proposed School Sites
- Undercrossing
- ⊠ Proposed Interchange
- ⊕ Interchange



Map prepared by the  
 City of Selma GIS Dept  
 6/9/2006

2 0 2 4 Miles